

Alabama Ghana Virtual Symposium — Bios



PROFESSOR JAMES T. DALTON
Provost of The University of Alabama

Dr. James T. Dalton, Ph.D. is the Executive Vice President and Provost of The University of Alabama. Provost Dalton comes to UA as the former Dean and Professor of Pharmaceutical Sciences in the College of Pharmacy at the University of Michigan. He received his Bachelor of Science in Pharmacy from the University of Cincinnati (1986) and Doctor of Philosophy in pharmaceuticals and pharmaceutical chemistry from Ohio State University (1990). Dean Dalton rose through the faculty ranks in the Department of Pharmaceutical Sciences in the College of Pharmacy at the University of Tennessee (1992-2000) before returning to Ohio State where he served as Professor and Chair in the Division of Pharmaceutics (2000-2007). He began an entrepreneurial leave of absence from Ohio State in 2005 and finally left OSU in 2007 to devote his full time effort as Chief Scientific Officer at GTx, Inc. in Memphis, TN (2007-2014) where he oversaw the preclinical and clinical development of selective androgen receptor modulators, which he will be talking about today. He was recently elected to the National Academy of Medicine and is a Fellow of the American Association for the Advancement of Science (AAAS) and American Association of Pharmaceutical Scientists (AAPS). He has co-authored over 300 original abstracts and peer-reviewed scientific manuscripts and is an inventor on over 400 United States and international patent applications related to selective androgen receptor modulators, selective estrogen receptor alpha and beta ligands, tubulin antagonists, and receptor tyrosine kinase inhibitors.



JOSEPH P. MESSINA, PH.D.
Dean of College of Arts and Sciences
The University of Alabama

Professor of Geography (Ph.D. 2001 UNC-Chapel Hill). Dean of the College of Arts and Sciences. Awarded research honors from NASA through the New Investigator Program, the National Institutes of Health Roadmap Program, and the Sigma Xi / MSU Young Scholar of the Year. Co-edited special issues in *Photogrammetric Engineering and Remote Sensing*, *Environment and Planning A*, and *Environment and Planning B*. Served on the Organizing committee for Geocomputation 2005, International Medical Geography Symposium 2013, Accuracy 2014. Served on the EPA panel establishing a national program on behavioral and social science research and the environment. Served on national review panels for the National Institutes of Health (NIGMS, NIEHS, NIAID); the National Science Foundation's *Cyber Enabled Discovery and Innovation* and the *Decision Making Under Uncertainty* programs and Geography

and Spatial Sciences; NASA's *Terra, Aqua, and ACRIM, ESSF, Carbon*, and the LCLU programs; EPA's *Advanced Monitoring Initiative*, NAS's *Deepwater Horizon*. Served in leadership roles or on select committees for the Association of American Geographers, the remote sensing specialty group of the Association of American Geographers, and the American Society for Photogrammetry and Remote Sensing. Geography Awareness Week Plenary Speaker at multiple universities. 2014 BCBSM Foundation McDevitt Excellence in Research Award, AT&T/MSU 2013 Technology Enhancement teaching award. Honorable Discharge, United States Army.

Research Emphases

General Areas: Population-Environment Interactions, Medical Geography, Geographic Information Science, Remote Sensing, Spatial Analyses, and Land Change Science.

- Population-Environment Interactions: The integration of people, spaces, and the environment through the lens of dynamic models and complex systems. Field research activities have taken place in Malawi, Kenya, Mali, Thailand, Vietnam, China, Ecuador and Colombia.
- Medical Geography: Health and disease research has focused on malaria and African Trypanosomiasis in East Africa. Health care delivery has focused on the access to care in Michigan and China.
- Geographic Methods: Landscape pattern metrics, error and uncertainty, dynamic spatial simulation models, complex systems research.

Education

Degree Institution Specialty Years

Ph.D. University of North Carolina at Chapel Hill Geography 1997-2001

M.S. George Mason University Geographic and Cartographic Sciences 1992-1994

B.Cert. George Mason University Environmental Management 1992

B.A. George Mason University Biology 1989-1992



RICHARD FRIEND, MD

**Dean of College of Community Health Sciences
The University of Alabama**

Dr. Richard Friend is dean of The University of Alabama College of Community Health Sciences and professor of family, internal, and rural medicine. He is a physician with extensive administrative experience in family medicine at two universities, and he spent a decade in private practice. He is also a member of the UA System Health and Safety Task Force and helping to lead the University's response to COVID-19.

Dr. Friend joined CCHS in 2012 as associate professor and director of the UA Tuscaloosa Family Medicine Residency, one of the oldest and largest family medicine residencies in the country. He was also named vice chair of the CCHS Department of Family Medicine and director of University Medical Center's Family Medicine Clinic. CCHS operates UMC, the largest multi-specialty community medical practice in West Alabama with locations in Tuscaloosa, Northport

and Demopolis and 150,000 patient visits last year. Prior to joining CCHS, Dr. Friend served as assistant director and then director of the Louisiana State University Family Medicine Residency in Bogalusa.

In addition to his administrative experience, Dr. Friend has substantial clinical experience, including inpatient and ambulatory medicine, endoscopic procedures, advanced orthopedics and OB/GYN procedures, and extensive emergency room experience. He has also served as a medical director for nursing homes, a home hospice and a home health company.

Dr. Friend has been awarded millions of dollars in grant funding, authored published articles and given invited presentations. He is a member of the American Academy of Family Physicians, the Association of Family Medicine Residency Directors and the Alabama Academy of Family Physicians, and he serves on the Alabama Academic Family Medicine Council.

Dr. Friend graduated from Louisiana State University School of Medicine with honors and completed his residency at LSU Health Sciences Center in Shreveport. He earned his undergraduate degree in Psychology from Tulane University.

DR. CYNTHIA WARRICK

President of Stillman College

Dr. Cynthia Warrick began her tenure as Interim President of Stillman College on January 1, 2017. A pharmacist and health services researcher, Dr. Warrick has 20 years of Higher Education experience as Faculty and Administrator. Recent Executive Leadership positions include: Interim President of Grambling State University and South Carolina State University. Dr. Warrick began her academic career on the faculty of Howard University, followed by appointments at the University of Texas Houston Health Science Center, Texas Southern University, Florida A&M University, and at Elizabeth City State University. A native of San Antonio, Texas, Dr. Warrick received the BS in Pharmacy from Howard University; MS in Public Policy from the Georgia Institute of Technology; and the PhD in Environmental Science and Public Policy from George Mason University. Her collaborative leadership style is focused on producing academic excellence, administrative accountability, bio-medical research and student success outcomes.

On April 24, 2017, Dr. Warrick graciously accepted the commitment to lead Stillman during this critical time in its 140-plus year history.



PROFESSOR NANA ABA APPIAH AMFO
Pro-Vice Chancellor of Student and Academic Affairs
The University of Ghana

Professor Nana Aba Appiah Amfo is Pro Vice-Chancellor (Academic and Student Affairs), University of Ghana. She holds PhD and MPhil degrees from the Norwegian University of Science and Technology and a BA in French and Linguistics from the University of Ghana. Professor Amfo has received additional training in higher education management and leadership from Harvard Business School, University of Applied Sciences, Germany, INSEAD, France, and the National Council for Tertiary Education, Accra. Professor Amfo specializes in language use in context, which includes language and gender, language and politics and language and health. She has published numerous journal articles and book chapters in reputable local and international publishing outlets. She has four co-edited books to her credit, and serves on the editorial boards on a number of international journals. Professor Amfo has acquired extensive multi-cultural experience through various professional engagements in twenty countries in Africa, Europe, Asia, North America and Australia. She has served as a facilitator for several capacity building training programs in both the public and private higher education sector, and well as other public organizations. Professor Amfo is a member of several professional associations including the Society of Communication, Medicine and Ethics, International Pragmatics Association, African Pragmatics Association, West African Linguistics Society and Linguistics Association of Ghana, where she served as President from 2010 – 2014. She serves on the Executive Committee of the International Federation for Modern Languages and Literatures and the Consultation Board of the International Pragmatics Association. She is a fellow of the African Humanities Program of the American Council of Learned Societies, German Academic Exchange Program (DAAD), Commonwealth Professionals Fellowship, Alexander von Humboldt Foundation and the International Women’s Forum Leadership Program. Professor Amfo has a passion for mentoring. She has facilitated mentoring programs for young girls and boys and loves to mentor mostly younger professional women to help achieve a holistic and fulfilling work-life balance.



PROFESSOR KWAKU A.A. BOAKYE
Dean, Centre for International Education
University of Cape Coast

Professor Boakye is a Professor Tourism specialising in Destination Governance and the Tourism-Development Nexus. He is presently the Dean of International Education, University of Cape Coast.

PROFESSOR JOHN OFOSU-ANIM

Pro-Vice Chancellor

Central University

Professor John Ofosu-Anim is the Pro-Vice Chancellor (Academic) of Central University. A position he has held since February, 2018. Before his appointment as Pro-Vice Chancellor, he was the Dean, School of Architecture and Sciences of the same university from September, 2017. He has a BSc degree in Agriculture from University of Ghana, MPhil in Crop Science and a PhD in Agronomy from Kagawa University and Nagoya University, respectively in Japan. Before joining Central University, Professor Ofosu-Anim was the Dean, School of Agriculture, University of Ghana from 2011 to 2017; served as Vice Dean, School of Agriculture and Head of Department of Crop Science. Professor Ofosu-Anim also served as a member of Council of University of Ghana from 2005 to 2007 and represented University of Ghana on West Africa Examination Committee (National Office) from 2013 to 2017 He has vast experience in university administration and served on all the relevant committees and Board in University of Ghana and Central University. Prof. Ofosu-Anim is still serving on such bodies in Central University. Professor Ofosu-Anim has published widely in both international journals and belongs to many international and local scientific organizations.

KEYNOTE SPEAKER: RAEGAN W. DURANT, MD, MPH

Division of Preventive Medicine, University of Alabama at Birmingham

Cooper Green Mercy Health Services Authority

Raegan W. Durant, MD, MPH, is an Associate Professor of Medicine in the University of Alabama at Birmingham (UAB) Division of Preventive Medicine and General Internal Medicine. He is a native of Alabama and completed a BS in Biology at Howard University in Washington, DC. He completed his medical education at the Johns Hopkins University School of Medicine in Baltimore, MD, followed by residency training in Internal Medicine at Duke University Medical Center in Durham, NC. Dr. Durant went on to complete a research fellowship at Beth Israel Deaconess Medical Center and the Harvard Medical School in Boston, MA. During his fellowship, he also received a master's degree in Public Health from the Harvard School of Public Health. Dr. Durant returned to Alabama in 2006 and joined the faculty in the Division of Preventive Medicine at UAB. Dr. Durant's research is focused on assessing the impact of psychosocial factors, such as social support, on chronic disease outcomes in minority populations with an eye toward developing tailored community-based interventions. Dr. Durant also studies multi-level barriers to the recruitment of minorities into clinical trials to inform the development of system-level and behavioral interventions to increase diversity in research study populations.

In addition to his research, Dr. Durant serves as Medical Director at the Cooper Green Mercy Health Services Authority, a multi-specialty, publicly funded ambulatory care center serving mostly low-income, underinsured, and uninsured residents of Jefferson County, AL.

Dr. Durant is an active member of the both American Heart Association and the Society of General Internal Medicine, which awarded him the 2020 Herbert W. Nickens Minority Health and Representation in Medicine Award.

PROF. AKOSUA AMPOFO
University of Ghana

Adomako Ampofo is Professor of African and Gender Studies at the Institute of African Studies, University of Ghana (UG). In 2005 she became the foundation Director of the University of Ghana's Centre for Gender Studies and Advocacy, and from 2010-2015 she was the Director of the Institute of African Studies. Adomako Ampofo is President of the African Studies Association of Africa <http://www.as-aa.org/index.php/officers>; an honorary Professor at the Centre for African Studies at the University of Birmingham; and a Fellow of the Ghana Academy of Arts and Sciences. She is the immediate past Dean of International Programmes at the University of Ghana.

Adomako Ampofo considers herself an activist scholar, and at the heart of her work are questions of identity and power—within families, institutions, political and religious spaces, and the knowledge industry. Her areas of interest include African knowledge systems, higher education, race and identity politics, gender relations, masculinities, and popular culture. In her current work on black masculinities, she explores the shifting nature of identities among young men in Africa and the diaspora. Earlier work on masculinities has explored the ways in which the discourse of “men of God” (i.e, religious leaders) becomes a meta knowledge and (re)defines femininity.

Her recent publications include

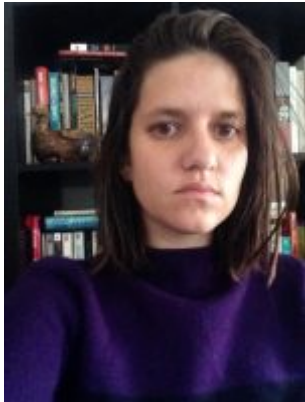
- “Re-viewing Studies on Africa, #Black Lives Matter, and Envisioning the Future of African Studies” in *African Studies Review* (59)2: 7-27.
- “*Me san aba*: The Africa We Want and an African-centered Approach to Knowledge Production” In Markus Schulz (Ed.) *Global Sociology and the Struggles for a Better World*, edited by Markus Schulz, London: Sage (2019).
- Co-edited, with Cheryl Rodriguez and Dzodzi Tsikata *Transatlantic Feminisms: Women's and Gender Studies in Africa and the Diaspora*; Lanham, MD, Lexington Books (2015).

She is Editor-in-Chief, *Contemporary Journal of African Studies* and Co-Editor, Critical Investigations into Humanitarianism in Africa blog, www.cihablog.com.

Adomako Ampofo is on the board of several organisations including the U.S African Studies Association; The Centre for the Advancement of Scholarship, University of Pretoria, and Chairperson of a Ghanaian youth-led organization, ExLA, who have successfully hosted three Young African Women Congresses. She is a member of The Council for the Development of Social Science Research in Africa (CODESRIA); the Network for Women's Rights in Ghana (NETRIGHT), and the Ghana Domestic Violence Coalition.

Adomako Ampofo's work has been variously recognized; She has been a Junior Fulbright Scholar; a New Century Fulbright Scholar and a Senior Fulbright Scholar-in-Residence. She has been a Fellow at the Rockefeller Foundation's Bellagio centre. In 2010 she was awarded the Feminist Activism Award by Sociologists for Women and Society (SWS); in 2014 she was a Mellon Fellow at the Centre for African Studies at the University of Cape Town; in 2015, she was the African Studies Association (of America's) *African Studies Review* Distinguished lecturer; and in 2019 she delivered the Audrey Richards Distinguished Public Lecture at the Centre for African Studies at the University of Cambridge.

Follow her: @adomakoampofo.



SARA-MARIA SORENTINO, ASSISTANT PROFESSOR
University of Alabama, College of Arts and Sciences

Sara-Maria Sorentino is an assistant professor of Gender & Race Studies. Her research is interested in excavating connections between anti-black violence, philosophical abstraction, and material reproduction. She has work published or forthcoming in *Rhizomes, Theory & Event, International Labor and Working-Class History, Antipode*, and *Telos*. She spent several years living in Tamale, Ghana, where she studied Dagbamba drumming.

DR. EMMANUEL SABORO, SENIOR LECTURER
University of Cape Coast

Dr. Emmanuel Saboro is a Senior Lecturer at the Centre for African and International Studies, University of Cape Coast. He obtained his PhD at the Wilberforce Institute for the Study of Slavery and Emancipation (WISE), University of Hull in the United Kingdom. Dr. Saboro is an interdisciplinary scholar with research interests centered on the interface between Literature/Folklore and Oral History. Specifically, he has been interested in the impact of the Trans-Atlantic Slave Trade on Africa, Late 19th and 20th Century Abolitionism and Anti-Slavery Discourses, 19th Century internal Slave trafficking in Africa in general and Northern Ghana in particular. Most recently, his research has focused on Memory, Trauma, Resistance and Identity Construction in Northern Ghana. His book: *Wounds of Our Past: Remembering Enslavement in African Oral Narratives* is currently under consideration by Brill Publishers: Leiden and Boston.



JENNY SHAW, ASSOCIATE PROFESSOR
University of Alabama, College of Arts and Sciences

Research Areas

- History of the Atlantic World
- History of the Early Modern English Caribbean
- Race and Slavery in the Americas
- Approaches to the Archive

Jenny Shaw received her PhD from NYU in 2009. She is interested in constructions of race, enslavement, and power dynamics in the early modern English world. Her first book, *Everyday Life in the Early English Caribbean: Irish, Africans, and the Construction of Difference* (Athens: UGA Press, 2013), approached these issues from the perspectives of Irish colonists and enslaved Africans. Her current project examines the interracial family born to wealthy planter John Peers in seventeenth-century Barbados. Provisionally entitled, *The Planter's Progeny: Family and the Formation of an Atlantic World, 1630-1730*, this project mines archives in England, West Africa, and the Caribbean to investigate how the experiences of this multi-generational family both reflect and challenge the hierarchies, labor systems, and mobility that characterized the early modern British Atlantic World. In addition to essays, book chapters, and reviews, she has published articles in *Slavery & Abolition*, *The William and Mary Quarterly*, and *Past & Present*.

MS. BRIE SMILEY, MA STUDENT

Brie Smiley is a second year master's student in the Women's Studies program at the University of Alabama. Brie's primary research is concerned with African American history, Slavery, African American Literature, political ontology, critical race theory, Black feminist theory, and the Black South. Brie is interested in Afropessimism, counter-humanism narratives, speculative fiction, dystopia, literary theory, rhetoric, Blackness in Latin America, particularly Brazil as well as the relationship between the nation state, gender and race.



PAMELA PAYNE FOSTER, PROFESSOR
University of Alabama, College of Community Health Sciences

Pamela Payne-Foster, MD, MPH, is a preventive medicine/public health physician and professor of community medicine and population health. She is also deputy director for Community Outreach for the College's Institute for Rural Health Research. Payne-Foster teaches medical students in the College's Community Rural Medicine Clerkship, its Community Rural Medicine Ambulatory Acting Internship, and is a frequent Special Topics and Co-Enrolled Elective Instructor. She also teaches and interacts with undergraduate and graduate students at The University of Alabama in her role as coordinator of health-related service-learning activities,

and in research endeavors in rural and underserved communities in Alabama. Payne-Foster has research interests in health disparities, including HIV/AIDS, obesity and diabetes; bioethics and medical ethics; and diversity and cultural competency issues in health care



SHAMEKA CODY, ASSISTANT PROFESSOR
University of Alabama, Capstone College of Nursing

Dr. Shameka Cody is an Assistant Professor at the Capstone College of Nursing. She is a board-certified Adult and Geriatric Nurse Practitioner. Her primary research focuses on the impact of racial and sleep health disparities on antiretroviral adherence among older adults with HIV. Dr. Cody is also working on several projects related to HIV and substance/opioid use in rural Alabama. Her most recent project focused on the impact of education related to opioid toxicity and naloxone administration among baccalaureate nursing students.

She is a 2019 recipient of a pilot grant sponsored by the UAB Resource Center for Minority Aging Research examining differences in sleep quality and EEG/ERP metrics among older African Americans and Caucasians with HIV. Dr. Cody has 20+ publications on HIV and aging, and she has presented at several local and international conferences. She teaches Adult Health in the Undergraduate Program and Nursing Informatics in the RN-BSN mobility program. She has 10 years of clinical experience in various areas including medical/surgical, adult primary care, and infectious disease.



STEPHANIE MCCLURE, ASSISTANT PROFESSOR
University of Alabama, College of Arts and Sciences

My overarching area of interest is culture, the body, and health. Said in another way, my primary research interest is the body as the subject *and* object of culture, and the bearing that subject/object duality has on how health is understood, experienced, assessed, etc. My population focus is African American women and girls.

My current pursuits with respect to that overarching interest fall into three categories:

- physicality and identity
- intersectionality
- physical activity and wellbeing

My current projects and their category alignment:

- Utility of robust norms assessment for increasing the predictive capacity of health behavior theories (physicality and wellbeing)
- Effect of the psychosocial benefits of physical activity on girls' school performance (physicality and wellbeing)

- Collage construction as a method for exploring physicality and identity (physicality and identity)
- Race/gender as a key intersection in African American adolescent girls' physicality (intersectionality)
- History as a social determinant of health (this really goes back to my overarching question).



**DEBRA NELSON-GARDELL, ASSOCIATE PROFESSOR AND
COORDINATOR OF INTERNATIONAL INITIATIVES**
University of Alabama, School of Social Work

Areas of Interest and Expertise

- Clinical social work practice with individuals, families, and groups
- Child victimization and emotional trauma
- International social work education and practice

Dr. Nelson-Gardell's roles in the UA School of Social Work include those of instructor, researcher, advocate for international experiences, mentor, and supervisor. Throughout her academic career she has pursued the goal of linking practice and research. She continues to actively pursue direct practice and outreach opportunities in the community with the hope of bringing what she has learned as a scholar to bear in "real life." Her research activities inform Her teaching, and she hopes her research acts to make her a role model for her students around scientific endeavors, in addition to providing opportunities to work with students as partners in the research endeavor. Working as Coordinator of International Programs provides an outlet for her passionate belief that international experiences promote cultural responsiveness in social work practice and research. Based on continuous experiences with direct practice with social work clients, along with her research activities, she works to "make a difference" in the world. She has spent her career enacting her strong commitment to understanding and ameliorating the emotional effects of trauma in the lives of children and adolescents.



HILARY GREEN, ASSOCIATE PROFESSOR
University of Alabama, College of Arts and Sciences

Dr. Hilary N. Green is an Associate Professor of History in the Department of Gender and Race Studies. Her research and teaching interests include the intersections of race, class, and gender in 19th Century African American history, the American Civil War Era, Reconstruction Studies, Civil War Memory, and the Black Atlantic. She is the author of *Educational Reconstruction: African American Schools in the Urban South, 1865-1890* (Fordham University Press, 2016) as well as articles, book chapters and other scholarly publications. She is the co-series editor of *Reconstruction Reconsidered, a University of South Carolina Press series,*

the book review editor for the *Journal of North Carolina Association of Historians*, and a regular contributor to *Muster*, the online blog for the *Journal of the Civil War Era*. She is currently at work on a second book manuscript examining how everyday African Americans remembered and commemorated the Civil War.

KEYNOTE SPEAKER: DR. BILLY KIRKPATRICK

Director

Five Horizons Health Services

Dr. Billy Kirkpatrick is the Executive Director of Five Horizons Health Services in Tuscaloosa, Alabama and an adjunct faculty member at the University of Alabama Department of Political Science. Five Horizons Health Services is a nonprofit community-based organization that provides services in West Alabama and East Mississippi. Founded in 1988 as West Alabama AIDS Outreach, the agency's original mission was to provide HIV-related outreach and prevention services to West Alabama. It has expanded to include a variety of services for populations in need of specialized or general care. Dr. Kirkpatrick has administered numerous programs designed to meet the holistic needs of individuals dually facing poverty and HIV infection and designed HIV prevention, testing, and advocacy programs for college campuses and rural areas. He teaches courses related to nonprofit administration for graduate students.